



# 577

## YONGE STREET

### RETAIL FOR SUBLEASE





# PROPERTY DETAILS

GROUND FLOOR:	4,200 SF
AVAILABLE:	Immediately
LEASE EXPIRY:	July 31, 2030
NET RENT:	Please contact Listing Agents
ADDITIONAL RENT:	\$20.00 PSF (est. 2022)

## HIGHLIGHTS

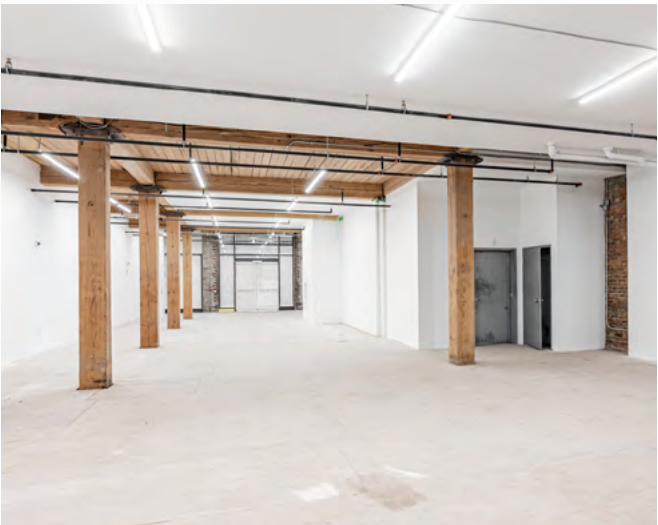
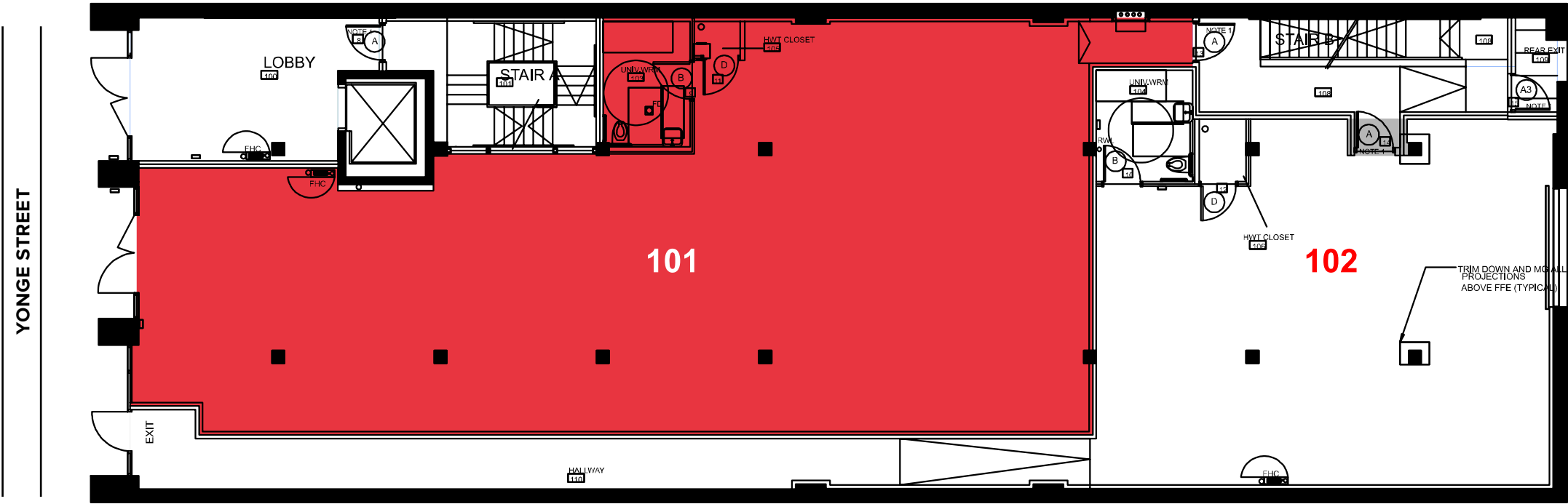
- Flagship retail opportunity
- Recently renovated brick-and-beam building with new glass
- Restored original brick facade
- Ample frontage on the densely populated Yonge Street Corridor
- Steps to Bloor and Wellesley TTC Subway Stations





# FLOOR PLAN

4,200 SF



# NEIGHBOURHOOD RETAIL





# 577

## YONGE STREET

### RETAIL FOR SUBLEASE

#### AGENCY RETAIL GROUP

##### BRANDON GORMAN\*\*

Senior Vice President

+1 416 855 0907

Brandon.Gorman@am.jll.com

##### AUSTIN JONES\*\*

Senior Sales Associate

+1 416 855 0939

Austin.Jones@am.jll.com

##### GRAHAM SMITH\*

Senior Vice President

+1 416 855 0914

Graham.Smith@am.jll.com

##### MATTHEW MARSHALL\*

Sales Associate

+1 416 238 9925

Matthew.Marshall@am.jll.com



Although information has been obtained from sources deemed reliable, JLL does not make any guarantees, warranties or representations, express or implied, as to the completeness or accuracy as to the information contained herein. Any projections, opinions, assumptions or estimates used are for example only. There may be differences between projected and actual results, and those differences may be material. JLL does not accept any liability for any loss or damage suffered by any party resulting from reliance on this information. If the recipient of this information has signed a confidentiality agreement with JLL regarding this matter, this information is subject to the terms of that agreement. ©2022 Jones Lang LaSalle IP, Inc. All rights reserved. \*Broker. \*\*Sales Associate.